

Specification ACCSI_v20

YARDMASTER® STATIC IRRIGATION ACCESSORIES

IRRIGATOR ON SLED

- Simple to operate
- Trouble free rotating drive
- Suitable for irrigation or effluent disposal
- Wetted diameter 26m
- Operating pressure 15-30 PSI
- Boom width 2.4m
- Mounted on sledge 900mm high
- 50mm connections

Ideal for...

Static Irrigation

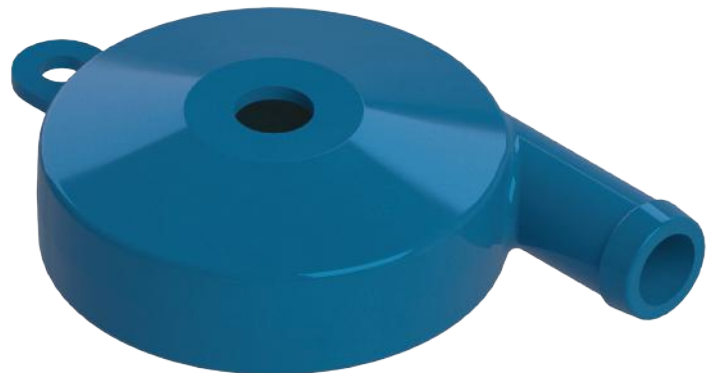


POT SPRAY

- 9m diameter spread
- Operating pressure 10-30psi
- 50mm Inlet
- 30mm Outlet

Ideal for...

Static Irrigation



Specifications are subject to change without notice

